

STANDARD



Gildan 5400



Gildan 8400



Jerzees 29LSR

PREMIUM



Gildan H400



Anvil 949



American Apparel 2007W

PREMIUM +



Alternative 5100



Champion CW26



Next Level 6071



Gildan 5400

5.3 oz.(US) 8.8 oz.(CA), 100% preshrunk cotton

Ash Grey: 99/1 cotton/polyester

Graphite Heather, Safety Green & Safety Orange: 50/50 cotton/polyester

Sport Grey: 90/10 cotton/polyester

Classic fit

Seamless double needle 7/8" collar



Ash



Black



Carolina Blue



Forest



Garnet



Irish Green

**PLUS
+6
COLORS**



Gold



Maroon



Navy



Purple



Royal



Safety Orange



Gildan 8400

5.5 oz., 50/50 preshrunk cotton/polyester

Classic fit

DryBlend technology: delivers moisture-wicking properties

Seamless double needle 7/8" collar

Taped neck and shoulders

Rib cuffs



Ash



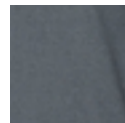
Black



Carolina Blue



Forest Green

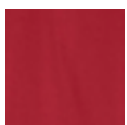


Dark Heather

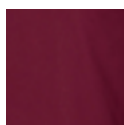


Orange

**PLUS
+3
COLORS**



Red



Maroon



Navy



Safety Green



Royal



Safety Orange



Alstyle 1904

5.1 oz.(US) 8.6 oz.(CA), 100% cotton

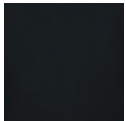
Charcoal Heather & Graphite Heather: 50/50 cotton/polyester

Classic fit

7/8" collar

Taped neck and shoulders

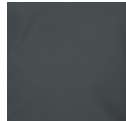
Rib cuffs



Black



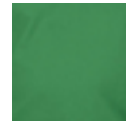
Charcoal
Heather



Charcoal



Graphite
Heather



Kelly



Military
Green



Navy



Red



Royal



White



Fruit of the Loom 4930

5 oz., pre-shrunk 100% cotton

Ash is 98/2 cotton/polyester

Athletic Heather is 90/10 cotton/polyester

Black Heather, Retro Heathers, Safety Colors, and Neons are 50/50 cotton/polyester

High-density fabric for exceptional print clarity

Seamless 1x1 ribbed collar



Ash



Azalea



Black



Burnt Orange



Cardinal



Denim

**PLUS
+20
COLORS**



Gold



Kelly



Pacific Blue



Purple



Royal



True Red



Jeerzees 21MLR

5.3 oz., 100% polyester

Cotton feel

Ideal for sublimation printing

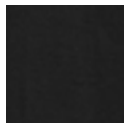
Moisture management and odor control properties

1x1 ribbed collar & cuffs

Double-needle stitched front neck and bottom hem



Athletic
Heather



Black



J. Navy



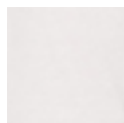
Royal



Safety
Green



True Red



White



Jeerzees 29LSR

5.4 oz., 50/50 pre-shrunk cotton/polyester

Oxford is 47/53 cotton/polyester

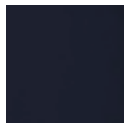
Advanced moisture-management performance

Noticeably softer hand & excellent printability

Double-needle stitched bottom hem and front collar



Ash



Black



California Blue



Forest Green



Cyber Pink



Burnt Orange

**PLUS
+18
COLORS**



Deep Purple



Island Yellow



J. Navy



Kiwi



Royal



Safety Green



Anvil 949

4.3 oz.(US) 7.5 oz.(CA), 100% preshrunk combed ringspun cotton, 30 singles

Heather Grey is 90/10 cotton/polyester

Heather Colors are 35/65 cotton/polyester

Semi-fitted

High stitch density for smoother printing surface

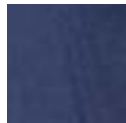
Shoulder-to-shoulder taping and seamed collar



Black



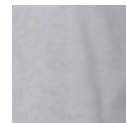
Charcoal



Heather
Blue



Heather
Green



Heather
Grey



Storm Grey



Navy



Red



White



Gildan H400

6 oz., 100% preshrunk combed ring spun cotton

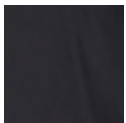
Graphite Heather: 50/50 cotton/polyester

Sport Grey: 90/10 cotton/black polyester

Classic fit

Seamless non-topstitched 7/8" collar

Taped neck and shoulders



Black



Chambray



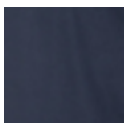
Coral Silk



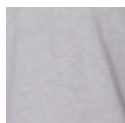
Flo Blue



Graphite
Heather



Sport Dark
Navy



Sport Grey



Sport
Scarlet Red



Lagoon
Blue



White



American Apparel 2007W

4.3 oz.(US) 7 oz.(CA), 100% combed ringspun cotton

100% cotton thread on color White

Unisex style

Classic fit

Shoulder-to-shoulder taping & 7/8" seamed collar

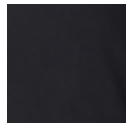
Ribbed knit cuffs



Asphalt



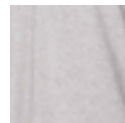
Baby Blue



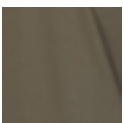
Black



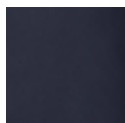
Creme



Heather
Grey



Lieutenant



Navy



Red



White



Russell Athletic 64LTTM

4.8 oz., 60/40 cotton/polyester jersey

Oxford is 53/47 polyester/cotton

Moisture management properties

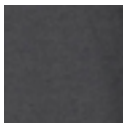
Anti-odor technology

UPF 30+ protection

Soft-spun yarn



Black



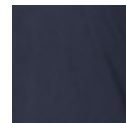
Black
Heather



Dark Green



Maroon



Navy



Oxford



Royal



True Red



White



Champion CW26

4.1 oz., 100% polyester

Moisture wicking, rapid dry interlock fabric

Smooth self-fabric collar

Coverseamed neck and armholes for durability

Double-needle stitched cuffs and bottom hem

50+ UPF protection



Black



Dark Green



Maroon



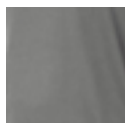
Navy



Royal Blue



Scarlet



Stone Grey



White



Anvil 784

5.4 oz., 100% preshrunk ringspun cotton, 24 singles

Ash is 99/1 cotton/polyester

Heather Grey is 90/10 cotton/polyester

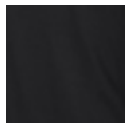
High stitch density for smoother printing surface

Double-needle stitching on neck, sleeves, and bottom hem

Shoulder-to-shoulder taping and seamed collar



Ash



Black



Charcoal



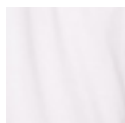
Heather
Grey



Navy



Red



White



Next Level 6071

4.3 oz., 50/25/25 polyester/combed ringspun cotton/rayon, 32 singles

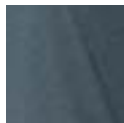
Set-in 1x1 triblend baby rib set-in collar

Hemmed sleeves

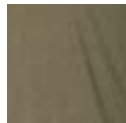
Satin label



Heather White



Indigo



Military Green



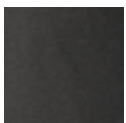
Premium Heather



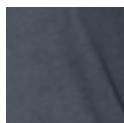
Tahiti Blue



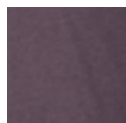
Venetian Grey



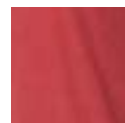
Vintage Black



Vintage Navy



Vintage Purple



Vintage Red



Vintage Royal



Gildan 47400

4.7 oz.(US) 7.8 oz.(CA), 100% Filament Polyester

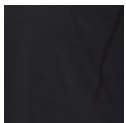
Active fit

Wicking properties

Anti-microbial properties

UPF 30+ (white is not applicable)

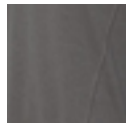
Snag resistant



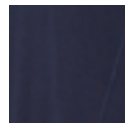
Black



Electric
Green



Marbled
Charcoal



Marbled
Navy



Marbled
Orange



Marbled
Royal



Red



White



Alternative 5100

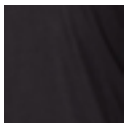
4.0 oz., 50/50 combed ringspun cotton/polyester

Unisex classic fit

Bound collar

Tearaway label

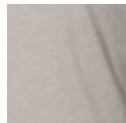
Made in a WRAP-certified factory



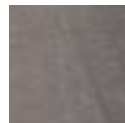
Black



Red



Smoke



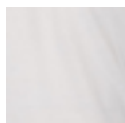
Vintage
Coal



Vintage
Navy



Vintage
Royal



White



Augusta 788

3.7 oz., 100% polyester wicking knit

Moisture management properties

Self-fabric collar and cuffs

Set-in sleeves

Tearaway label



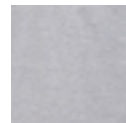
Ash



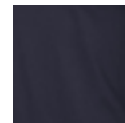
Black



Charcoal



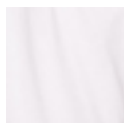
Heather
Grey



Navy



Red



White



Augusta 3075

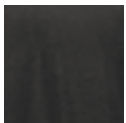
3.8 oz., 50/38/12 polyester/cotton/rayon triblend knit

Relaxed fit

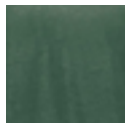
Crew neck

Set-in sleeves with rolled forward shoulder seam

Tearaway label



Black
Heather



Dark Green
Heather



Grey
Heather



Maroon
Heather



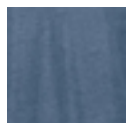
Navy
Heather



Red
Heather



Royal
Heather



Storm
Heather



White

Standard, Premium and Premium+ Explained

STANDARD



Our standard line of apparel is geared toward customers shopping with a conscious budget in mind. These are our best picks that won't break the bank. The standard garment offerings contain classic apparel brands such as Gildan, Hanes, Fruit of the Loom, and more.

You can find a range of color and style options within our standard line that are sure to be ideal for your next custom tee shirt project. We recommend the standard apparel line when ordering for projects like one time use, economic giveaways, and cost effective shirts.

PREMIUM



The beloved increase in quality at an extremely logical price point, makes our Premium catalog a favorite amongst customers. We created the premium line to encapsulate our very favorite apparel products.

Products found in the premium catalog are crafted with finer fabrics and more tailored fits. Our premium catalog aims to be an affordable upgrade from your basic t-shirt, and apparel offerings. Find brands like bella + canvas, Next Level, Alternative Apparel, and more in our Premium catalog.

PREMIUM +



The Premium+ line is suited for customers interested in ordering corporate clothing, retail ready apparel, and stand out garments that are a step above the rest. Our Premium+ catalog contains garments from top branded retailers such as Adidas, Carhartt, Nike, Ogio, Comfort Colors, and more.

This gear is unmatched when embellished with custom embroidery, high quality multi-color prints, and industry leading printing processes. Browse our Premium+ offerings to take your custom "t-shirt" to the absolute next level!